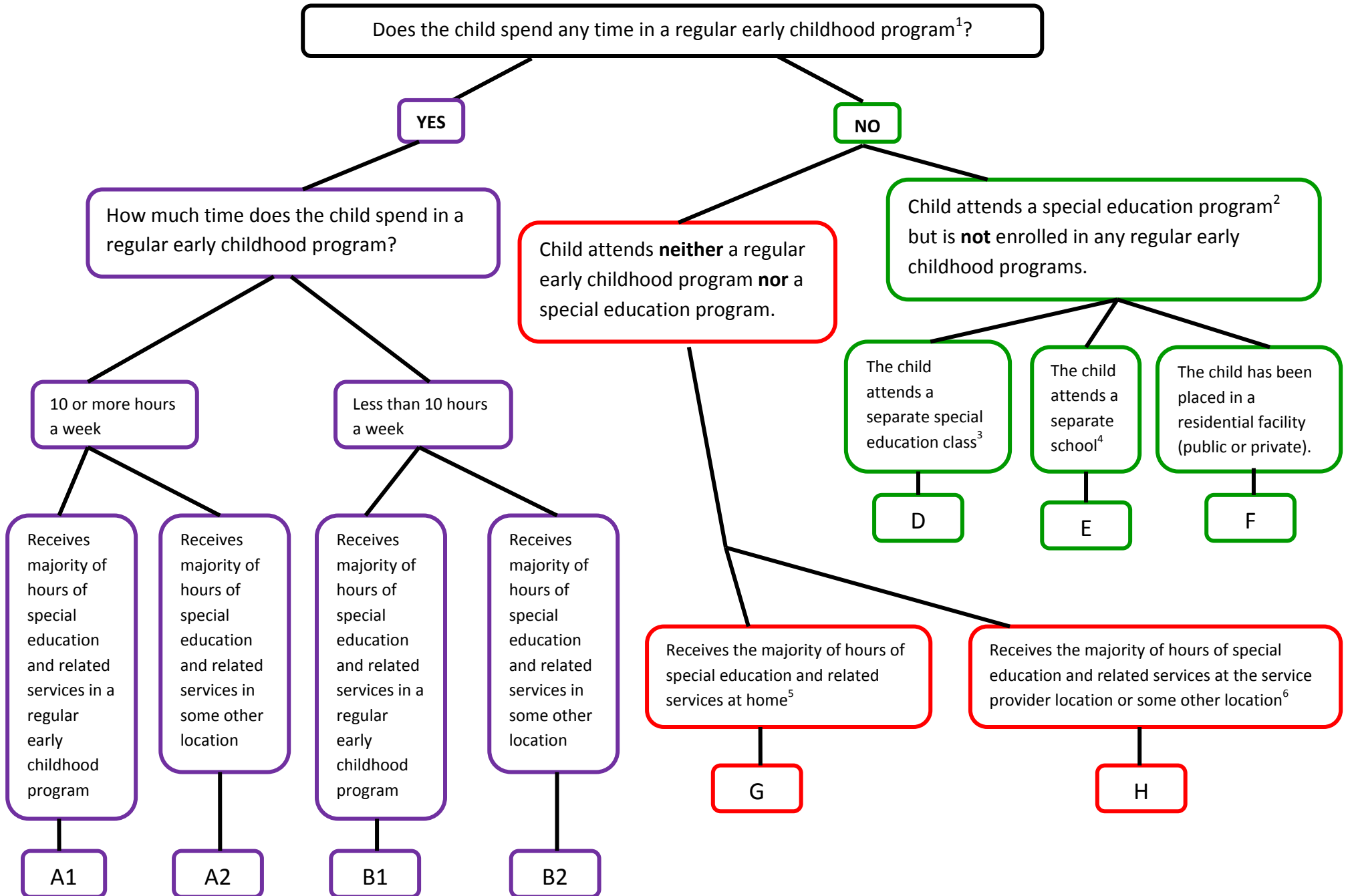


Horry County Schools
Preschool LRE Categories
September 2010



Horry County Schools
Preschool LRE Categories
September 2010

Definitions

¹ **Regular early childhood program** is defined as “a program that includes a majority (at least 50%) of nondisabled students, such as: Head Start; Kindergarten (public or private); Child Development; and, child development centers or child care.

² **Special education program** is defined as “a program that includes less than 50% nondisabled children, such as: special education classrooms in regular school buildings, trailers or portables outside regular school buildings, child care facilities, hospital facilities on an outpatient basis, other community-based settings; separate schools; and residential facilities.

³ **Separate Special Education Class** is defined as “a special education program in a class with less than 50% nondisabled children.”

⁴ **Separate School** is defined as “a public or private day school designed specifically for children with disabilities.”

⁵ **Home** is defined as “the principal residence of the child’s family or caregivers (including babysitters), and who **does** not attend a regular early childhood program **or** a special education program provided in a separate class, separate school, or residential facility.”

⁶ **Service Provider Location or some other location** is defined as services provided in a location where the service provider is employed or some other location that is not in any other category. “For example, speech instruction that is provided in: private clinician’s offices, clinician’s offices located in school buildings, and hospital facilities on an outpatient basis.”