

# Planning Calendar



Horry County Schools

# 2009-2010

# District Office Directory

**4 Year-Old Child Development**.....488-6793  
e-mail: [childdev@horrycountyschools.net](mailto:childdev@horrycountyschools.net)

**Academies** .....488-6767  
e-mail: [careers@horrycountyschools.net](mailto:careers@horrycountyschools.net)

**Adult Education** .....488-6200  
e-mail: [adult@horrycountyschools.net](mailto:adult@horrycountyschools.net)

**Athletics** .....488-6846  
e-mail: [athletics@horrycountyschools.net](mailto:athletics@horrycountyschools.net)

**Attendance**.....488-6838  
e-mail: [attendance@horrycountyschools.net](mailto:attendance@horrycountyschools.net)

**Business/Community Partnerships** ....488-6777  
e-mail: [partnerships@horrycountyschools.net](mailto:partnerships@horrycountyschools.net)

**Communications/Public Information**....488-6777  
e-mail: [pi@horrycountyschools.net](mailto:pi@horrycountyschools.net)

**Construction/Facilities** .....488-6710  
e-mail: [construction@horrycountyschools.net](mailto:construction@horrycountyschools.net)

**Curriculum** .....488-6746  
e-mail: [curriculum@horrycountyschools.net](mailto:curriculum@horrycountyschools.net)

**Discipline** .....488-6771  
e-mail: [discipline@horrycountyschools.net](mailto:discipline@horrycountyschools.net)

**Drug Prevention** .....488-6991  
e-mail: [prevention@horrycountyschools.net](mailto:prevention@horrycountyschools.net)

**Elementary Schools** .....488-6935  
e-mail: [elementary@horrycountyschools.net](mailto:elementary@horrycountyschools.net)

**Employee Benefits** .....488-6924  
e-mail: [benefits@horrycountyschools.net](mailto:benefits@horrycountyschools.net)

**Family-School Resource Centers**.....488-6793  
e-mail: [centers@horrycountyschools.net](mailto:centers@horrycountyschools.net)

**Food Services** .....488-6927  
e-mail: [food@horrycountyschools.net](mailto:food@horrycountyschools.net)

**Gifted Education** .....488-6740  
e-mail: [gifted@horrycountyschools.net](mailto:gifted@horrycountyschools.net)

**Guidance Programs** .....488-6990  
e-mail: [guidance@horrycountyschools.net](mailto:guidance@horrycountyschools.net)

**Health Services** .....488-6805  
e-mail: [health@horrycountyschools.net](mailto:health@horrycountyschools.net)

**High Schools** .....488-6767  
e-mail: [highschool@horrycountyschools.net](mailto:highschool@horrycountyschools.net)

**Home Schooling**.....488-6723  
e-mail: [homeschool@horrycountyschools.net](mailto:homeschool@horrycountyschools.net)

**Homebound Instruction** .....488-6795  
e-mail: [homebound@horrycountyschools.net](mailto:homebound@horrycountyschools.net)

**Human Resources** .....488-6900  
e-mail: [personnel@horrycountyschools.net](mailto:personnel@horrycountyschools.net)

**Insurance/Student** .....1-866-267-0092

**Legal Matters** .....488-6765  
e-mail: [legal@horrycountyschools.net](mailto:legal@horrycountyschools.net)

**Media Services** .....488-6799  
e-mail: [media@horrycountyschools.net](mailto:media@horrycountyschools.net)

**Middle Schools** .....488-6908  
e-mail: [middleschool@horrycountyschools.net](mailto:middleschool@horrycountyschools.net)

**Multicultural Affairs** .....488-6736  
e-mail: [multicultural@horrycountyschools.net](mailto:multicultural@horrycountyschools.net)

**Parent Programs** .....488-6240  
e-mail: [parents@horrycountyschools.net](mailto:parents@horrycountyschools.net)

**Personalized Learning** .....488-6743  
e-mail: [personalized@horrycountyschools.net](mailto:personalized@horrycountyschools.net)

**School Board Policies** .....488-6765  
e-mail: [policies@horrycountyschools.net](mailto:policies@horrycountyschools.net)

**School Improvement Council** .....488-6554  
e-mail: [SIC@horrycountyschools.net](mailto:SIC@horrycountyschools.net)

**School Safety** .....488-6771  
e-mail: [safety@horrycountyschools.net](mailto:safety@horrycountyschools.net)

**S.M.A.R.T. Program** .....488-6815  
e-mail: [smart@horrycountyschools.net](mailto:smart@horrycountyschools.net)

**Staff Development**.....488-6746  
e-mail: [sd@horrycountyschools.net](mailto:sd@horrycountyschools.net)

**Strategic Planning**.....488-6778  
e-mail: [splan@horrycountyschools.net](mailto:splan@horrycountyschools.net)

**Student Affairs** .....488-6771  
e-mail: [students@horrycountyschools.net](mailto:students@horrycountyschools.net)

**Student Transfers**.....488-6770  
e-mail: [transfers@horrycountyschools.net](mailto:transfers@horrycountyschools.net)

**Students with Disabilities**.....488-6789  
e-mail: [iep@horrycountyschools.net](mailto:iep@horrycountyschools.net)

**Technology**.....488-6811  
e-mail: [tech@horrycountyschools.net](mailto:tech@horrycountyschools.net)

**Testing / Student Results** .....488-6843  
e-mail: [results@horrycountyschools.net](mailto:results@horrycountyschools.net)

**Textbooks** .....488-6743  
e-mail: [books@horrycountyschools.net](mailto:books@horrycountyschools.net)

**Transportation** .....488-6955  
e-mail: [bus@horrycountyschools.net](mailto:bus@horrycountyschools.net)

**Volunteers** .....488-6777  
e-mail: [volunteer@horrycountyschools.net](mailto:volunteer@horrycountyschools.net)

# 2009-10 Horry County Schools Directory

SCHOOL	ADDRESS	PHONE	FAX	GRADE
Academy for Arts, Science & Technology	895 International Dr., Myrtle Beach 29579	903-8460	903-8461	9-12
Academy for Technology & Academics	5639 Hwy 701N., Conway 29526	488-6600	488-6601	9-12
Aynor High	201 Jordanville Road, Aynor 29511	488-7100	488-7101	9-12
Carolina Forest High	700 Gardner Lacy Road, Myrtle Beach 29579	236-7997	236-7504	9-12
Conway High	2301 Church Street, Conway 29526	488-0662	488-0686	9-12
Green Sea Floyds High	4990 Tulip Grove Road, Green Sea 29545	392-3131	392-9805	6-12
Loris High	301 Loris Lions Road, Loris 29569	390-6800	390-6801	9-12
Myrtle Beach High	3302 Rbt. M. Grissom Prkwy, Myrtle Beach 29577	448-7149	445-2036	9-12
North Myrtle Beach High	3750 Sea Mountain Hwy., Little River 29566	399-6171	399-6509	9-12
Socastee High	4900 Socastee Blvd., Myrtle Beach 29588	293-2513	293-3393	9-12
St. James High	10800 Hwy. 707, Murrells Inlet 29576	650-5600	650-1004	9-12
Early College	2050 Highway 501E, Conway 29528	349-7102	349-7895	9-10
Scholars Academy	215 University Hall, Conway 29526	349-4117	349-6144	9-12
Horry County Education Center	2694 Highway 905, Conway 29526	488-7500	488-7501	8-12
Aynor Middle	400 Frye Road, Galivants Ferry 29544	358-6000	358-5065	6-8
Black Water Middle	900 East Cox Ferry Rd., Conway SC 29526	903-8440	903-8441	6-8
Conway Middle	1104 Elm Street, Conway 29526	488-6040	488-0611	6-8
Forestbrook Middle	4430 Gator Lane, Myrtle Beach 29588	236-7300	236-8065	6-8
Loris Middle	5209 Highway 66, Loris 29569	756-2181	756-0522	6-8
Myrtle Beach Middle	950 Seahawk Way, Myrtle Beach 29577	448-3932	448-1182	6-8
North Myrtle Beach Middle	11240 Highway 90, Little River 29566	399-6136	399-2233	6-8
Ocean Bay Middle	905 International Dr., Myrtle Beach 29579	903-8420	903-8421	6-8
St. James Middle	9775 St. James Road, Myrtle Beach 29588	650-5543	650-5610	6-8
Whittemore Park Middle	1808 Rhue Street, Conway 29527	488-0669	488-0665	6-8
Aynor Elementary	516 Jordanville Road, Aynor 29511	488-7070	488-7071	CD-5
Burgess Elementary	9645 Scipio Lane, Myrtle Beach 29588	650-4600	650-4602	K-5
Carolina Forest Elementary	285 Carolina Forest Blvd., Myrtle Beach 29579	236-0001	236-0152	CD-5
Conway Education Center	1620 Sherwood Drive, Conway 29526	488-6239	488-6233	CD
Conway Elementary	1101 Snowhill Drive, Conway 29526	488-0696	488-0656	CD-5
Daisy Elementary	2801 Red Bluff Road, Loris 29569	756-5136	756-3965	CD-5
Forestbrook Elementary	4000 Panthers Parkway, Myrtle Beach 29588	236-8100	236-8103	K-5
Green Sea Floyds Elementary	5000 Tulip Grove Road, Green Sea 29545	392-1078	392-1090	CD-6
Homewood Elementary	108 N. Clemson Circle, Conway 29526	365-2512	365-7211	CD-5
Kingston Elementary	4580 Highway 472, Conway 29526	365-3777	365-2764	CD-5
Lakewood Elementary	1675 Highway 396, Myrtle Beach 29575	650-6768	650-6748	K-5
Loris Elementary	901 E. Highway 9 Bus., Loris 29569	390-6860	390-6861	CD-5
Midland Elementary	3011 Nichols Highway, Galivants Ferry 29544	358-3036	358-0643	CD-5
Myrtle Beach Elementary	620 29th Ave. N., Myrtle Beach 29577	448-1774	448-1115	2-3
Myrtle Beach Intermediate	3301 Oak Street, Myrtle Beach 29577	626-5831	626-8528	4-5
Myrtle Beach Primary	612 29th Avenue N., Myrtle Beach 29577	448-1658	448-0139	CD-1
North Myrtle Beach Elementary	1283 Highway 57 S., Little River 29566	399-8800	390-8700	2-3
N. Myrtle Beach Intermediate	700 Sandridge Road, Little River 29566	399-2204	399-2250	4-5
North Myrtle Beach Primary	901 11th Avenue N., North Myrtle Beach 29582	663-0195	249-8638	CD-1
Ocean Bay Elementary	950 International Dr., Myrtle Beach 29579	903-8400	903-8401	CD-5
Palmetto Bays Elementary	8900 Hwy. 544, Myrtle Beach 29588	236-6200	236-7900	CD-5
Pee Dee Elementary	6555 Highway 134, Conway 29527	397-2579	397-1426	CD-5
Seaside Elementary	1605 Woodland Drive, Garden City 29576	650-3490	650-3479	K-5
Socastee Elementary	4950 Socastee Boulevard, Myrtle Beach 29588	650-2606	650-2629	CD-5
South Conway Elementary	3001 Fourth Avenue, Conway 29527	488-0272	488-0605	CD-5
St. James Elementary	9711 St. James Road, Myrtle Beach 29588	650-8220	650-7909	K-5
Waccamaw Elementary	251 Claridy Road, Conway 29526	347-4684	347-0398	CD-5

# MONDAY

# TUESDAY

# WEDNESDAY

## TESTING

**Aug. 26 - Sept. 18**  
PALS Testing, Gr. CD

**Aug. 31 - Sept. 18**  
MAP Norm Reference  
Achievement Test,  
Grs. 2-8; Grs. K, 1, 2, 9 &  
10 Optional

### JULY 2009

S	M	T	W	T	F	S
			1	2	3	4
5	6	7	8	9	10	11
12	13	14	15	16	17	18
19	20	21	22	23	24	25
26	27	28	29	30	31	

### SEPTEMBER 2009

S	M	T	W	T	F	S
		1	2	3	4	5
6	7	8	9	10	11	12
13	14	15	16	17	18	19
20	21	22	23	24	25	26
27	28	29	30			

New Teacher Academy 3

New Teacher Academy  
District-wide Registration 4

A-Team Mtg., 7:30 - 5:30 5  
Child Development Screenings-----

Board Work Session., 6 p.m.,  
Location TBD (if needed)

Offices Closed 10

School Work Day  
Cafeteria Managers'  
Staff Development 12

Begin school year  
work schedule 17  
District Staff Development Day

School Staff Development Day 18

School Staff Development Day 19

Board Mtg., 6 p.m. @ ATA

First Day of School 24

Child Find Clinic @ MBFLC  
& CEC 25

Interim Reports Issued  
(Daisy) 26

PAY DAY 31

# August

2009

## THURSDAY

## FRIDAY

## SAT/SUN

A-Team Mtg., 7:30 - 5:30 ----- 6	Offices Closed 7	8
		9
District Staff Development Day Cafeteria Managers' Staff Development 13	PAY DAY District Staff Development Day All Food Services Staff Development 14	15
		16
School Staff Development Day End Date for 1st Interim (Daisy) 20	School Work Day 21	SCSBA Law Conference, Hilton Head Island 22
		SCSBA Law Conference, Hilton Head Island 23
Child Find Screening @ Conway Education Cnt. 27	28	29
		30



- Workers' Compensation claims must be reported to the District Office within 24 hours of accident/ injury.
- All teachers must have a valid SC teaching certificate on file in Human Resources by Nov. 1, 2009.
- New employees must attend a New Hire Orientation prior to reporting to work. Register for the orientation by calling 488-6866.
- Fire drills must be conducted monthly & reported to the Office of Support Services

# MONDAY

# TUESDAY

# WEDNESDAY

## TESTING

**Aug. 26 - Sept. 18**  
PALS Testing, Gr. CD

**Aug. 31 - Sept. 18**  
MAP Norm Reference  
Achievement Test,  
Grs. 2-8; Grs. K, 1, 2, 9 &  
10 Optional

**Sept. 8 - 23**  
DIBELS Testing, Gr. K-1

**Sept. 12**  
ACT Testing, Grs. 11 & 12

**Sept. 30 - Oct. 1**  
EXPLORE Testing, Gr. 8

### AUGUST 2009

S	M	T	W	T	F	S
						1
2	3	4	5	6	7	8
9	10	11	12	13	14	15
16	17	18	19	20	21	22
23	24	25	26	27	28	29
30	31					

### OCTOBER 2009

S	M	T	W	T	F	S
				1	2	3
4	5	6	7	8	9	10
11	12	13	14	15	16	17
18	19	20	21	22	23	24
25	26	27	28	29	30	31

		1	2
<b>Labor Day Schools &amp; Offices Closed</b> 7	Child Find Screenings @ MBFLC 8	Principals' Cabinet, 7 a.m. A-Team Mtg., 8 a.m. 9	
Cafeteria Managers' Mtg., 8:30-11:00 a.m. @ DO 14	PAY DAY Substitute Workshop Child Find Screenings @ CEC 15	Business Cabinet, 11:30 a.m. 16	
Board Work Session, 6 p.m., Location TBD			
21	Child Find Screenings @ MBFLC 22	End Date for 1st Interim Report End 1st Quarter - 45 days (Daisy) 23	
Board Mtg., 6 p.m. @ ATA			
28	Interim Reports Issued Child Find Screenings @ CEC 29	PAY DAY 30	

# September

2009

**THURSDAY**

**FRIDAY**

**SAT/SUN**

3	4	5
		6
New Hire Orientation Class, 8:30 a.m. 10	11	12
		13
New Hire Orientation Class, 8:30 a.m. 17	18	19
		20
New Hire Orientation Class, 8:30 a.m. 24	Report Cards Issued (Daisy) 25	26
		27

**Constitution Week & Citizenship Day**  
Sept. 17-23

**Hispanic Heritage Month**



- Workers' Compensation claims must be reported to the District Office within 24 hours of accident/ injury.
- All teachers must have a valid SC teaching certificate on file in Human Resources by Nov. 1, 2009.
- New employees must attend a New Hire Orientation prior to reporting to work. Register for the orientation by calling 488-6866.
- Fire drills must be conducted monthly & reported to the Office of Support Services

# MONDAY

# TUESDAY

# WEDNESDAY

## TESTING

**Sept. 30 - Oct. 1**  
EXPLORE Testing, Gr. 8

**Oct. 10**  
SAT Testing, Grs. 11 & 12

**Oct. 14 & 17**  
PSAT Testing, Gr. 10

**Oct. 20 - 22**  
HSAP Testing

**Oct. 23 - 30**  
HSAP Testing Makeups

**Oct. 24**  
ACT Testing, Grs. 11 & 12

- Workers' Compensation claims must be reported to the District Office within 24 hours of accident / injury.
- Fire drills must be conducted monthly and reported to Support Services.
- New employees must attend a New Hire Orientation prior to reporting to work. Register for the orientation by calling 488-6866.
- All teachers must have a valid SC teaching certificate on file in Human Resources by Nov. 1, 2009.

5

Child Find Screenings @ CEC  
Student Cabinet, 9:00 a.m.

6

7

Board Work Session- 6 p.m.,  
Location TBD

Assistant Cafeteria Managers'  
Training, 8:30- 11:00 a.m.  
@ District Office 12

Child Find Screenings @  
MBFLC 13

Principal Cabinet, 7 a.m.  
A-Team Mtg., 8 a.m. 14

19

Child Find Screenings  
@ CEC 20  
All-County Chorus Senior High  
Auditions

Support Staff Cabinet,  
3:00 p.m. 21

Board Mtg., 6 p.m. @ ATA

End 1st Quarter - 45 days 26

Child Find Screenings @  
MBFLC 27

28

### SEPTEMBER 2009

S	M	T	W	T	F	S
		1	2	3	4	5
6	7	8	9	10	11	12
13	14	15	16	17	18	19
20	21	22	23	24	25	26
27	28	29	30			

### NOVEMBER 2009

S	M	T	W	T	F	S
1	2	3	4	5	6	7
8	9	10	11	12	13	14
15	16	17	18	19	20	21
22	23	24	25	26	27	28
29	30					

# October

2009

## THURSDAY

## FRIDAY

## SAT/SUN

Open Enrollment - All Month New Hire Orientation Class, 8:30 a.m.	1	2	3
			4
New Hire Orientation Class, 8:30 a.m.	8	1st Day - Letters of Agreement Issued	9
			10
			11
PAY DAY New Hire Orientation Class, 8:30 a.m.	15	16	17
			18
New Hire Orientation Class, 8:30 a.m. Teacher Forum, 2:30 p.m. Teacher Cabinet, 3:30 p.m. Parent Cabinet, 6:00 p.m.	22	23	24
			25
New Hire Orientation Class, 8:30 a.m.	29	<b>Student Holiday</b> School Work Day for Elementary and Middle Schools and District Staff Development Day for High Schools	30
			31
			<b>Nov 1</b>
			Daylight Savings Time Ends

School Lunch Week  
Oct. 12-16

National School Bus  
Safety Week  
Oct. 19-23

Red Ribbon Week  
Oct. 23-31

National Character  
Counts Week  
Oct. 18-24



# MONDAY

# TUESDAY

# WEDNESDAY

## TESTING

**Nov. 7**  
SAT Testing, Grs. 11 & 12

**Nov. 2 - 13**  
COGAT Testing, Grs. 2, 5  
& Referrals in Grs. 3-11

**Nov. 4 & 5**  
PLAN Testing, Gr. 10

**Nov. 30 - Dec. 18**  
MAP Norm Reference  
Achievement Test,  
Grs. 2-9 (K-1 optional)

OCTOBER 2009

S	M	T	W	T	F	S
				1	2	3
4	5	6	7	8	9	10
11	12	13	14	15	16	17
18	19	20	21	22	23	24
25	26	27	28	29	30	31

DECEMBER 2009

S	M	T	W	T	F	S
		1	2	3	4	5
6	7	8	9	10	11	12
13	14	15	16	17	18	19
20	21	22	23	24	25	26
27	28	29	30	31		

Report Cards Issued	2	Child Find Screenings @ CEC	3		4
Board Work Session, 6 p.m., Location TBD					
Cafeteria Managers' Mtg., 8:30 - 11:00 a.m. @ DO	9	Substitute Workshop Child Find Screenings @ MBFLC	10	Principal Cabinet, 7 a.m. A-Team Mtg., 8 a.m.	11
PAY DAY	16	Child Find Screenings @ MBFLC & CEC	17		18
Board Mtg., 6 p.m. @ ATA					
	23		24		25
				Thanksgiving Holiday Schools & Offices Closed -----	
PAY DAY	30				

# November 2009

## THURSDAY

## FRIDAY

## SAT/SUN

All-County Chorus - Middle School Auditions	5	6	SwampFest @ Playcard	7
				8
New Hire Orientation Class, 8:30 a.m. Assistant Principals' Safety Mtg., 3:30 - 5:00 p.m. @ DO	12	End Date for 2nd Interim Report (Daisy)	13	All-County Orchestra Auditions
				15
New Hire Orientation Class, 8:30 a.m. Interim Reports Issued (Daisy)	19	20	Academic Olympics	21
				22
	26	27		28
				29

**Veterans Day**  
November 11

**American Education Week - Nov. 15-21**

**National Parental Involvement Day**  
November 19



- Workers' Compensation claims must be reported to the District Office within 24 hours of accident/injury.
- Fire drills must be conducted monthly and reported to the Office of Support Services.
- New employees must attend a New Hire Orientation prior to reporting to work. Register for the orientation by calling 488-6866.
- All teachers must have a valid SC teaching certificate on file in Human Resources by Nov. 1, 2009.

# MONDAY

# TUESDAY

# WEDNESDAY

## TESTING

**Dec. 5**  
SAT Testing, Grs. 11 & 12

**Dec. 12**  
ACT Testing, Grs. 11 & 12

**Nov. 30 - Dec. 18**  
MAP Norm Reference  
Achievement Test,  
Grs. 2-9 (K-1- optional)

Child Find Screenings @ CEC  
End Date for 2nd Interim Report **1**

**2**

SCSBA Risky Business Seminar-----

Interim Reports Issued **7**  
All-County Band Auditions  
Assistant Cafeteria Managers' Mtg.,  
8:30 - 11:00 am @ District Office

Business Cabinet, 11:30 a.m. **8**  
Child Find Screenings @ MBFLC

Principal Cabinet, 7 a.m. **9**  
A-Team Mtg., 8 a.m.

Board Work Session & Regular Mtg.,  
6 p.m., @ ATA

**14**

PAY DAY **15**  
Child Find Screenings @ CEC

**16**

**21**

**22**

**23**

Winter Break Dec. 21 - Jan. 1 -----  
246-Day Employee Workday

246-Day Employee Workday

Schools & Offices Closed-----

**28**

**29**

**30**

Winter Break - Dec. 21 - Jan 1 -----  
246-Day Employee Workday

246-Day Employee Workday

246-Day Employee Workday

### NOVEMBER 2009

S	M	T	W	T	F	S
1	2	3	4	5	6	7
8	9	10	11	12	13	14
15	16	17	18	19	20	21
22	23	24	25	26	27	28
29	30					

### JANUARY 2010

S	M	T	W	T	F	S
					1	2
3	4	5	6	7	8	9
10	11	12	13	14	15	16
17	18	19	20	21	22	23
24	25	26	27	28	29	30
31						

# December 2009

## THURSDAY

## FRIDAY

## SAT/SUN

New Hire Orientation Class, 8:30 a.m. <b>3</b>	ADEPT -Pre-evaluation ends <b>4</b>	SCSBA Legislative & Advocacy Conference & Delegate Assembly <b>5</b>
New Hire Orientation Class, 8:30 a.m. <b>10</b>	<b>11</b>	SCSBA Legislative & Advocacy Conference & Delegate Assembly <b>6</b>
New Hire Orientation Class, 8:30 a.m. <b>17</b>	PAY DAY <b>18</b>	<b>12</b>  <b>13</b>
<b>24</b>	<b>25</b>	<b>19</b>  <b>20</b>
Schools & Offices Closed <b>31</b>	• Workers' Compensation claims must be reported to the District Office within 24 hours of accident/ injury. • New employees must attend a New Hire Orientation prior to reporting to work. Register for the orientation by calling 488-6866. • Fire drills must be conducted monthly & reported to the Office of Support Services	<b>26</b>  <b>27</b>

**Winter Break**  
December 21-Jan 1



# MONDAY

# TUESDAY

# WEDNESDAY

## TESTING

### Jan. 5 - 15

State End-of-Course Exams for Algebra I/ Math Tech 2; English I; Physical Science; US History & Constitution, & Biology

### Jan. 14 - 29

DIBELS, Gr. K-1

### Jan. 23

SAT Testing, Grs. 11 & 12

- Workers' Compensation claims must be reported to the District Office within 24 hours of accident/injury.
- Fire drills must be conducted monthly and reported to Support Services.
- New employees must attend a New Hire Orientation prior to reporting to work. Register for the orientation by calling 488-6866.

4

Child Find Screenings @ CEC

5

6

Planning Meeting, 9 a.m. & Board Work Session, 6 p.m. @ ATA

End 2nd Quarter - 90 days (Daisy)

11

Substitute Workshop  
Child Find Screenings @ MBFLC

12

Principal Cabinet, 7 a.m. A-Team Mtg., 8 a.m.

13

**Student Holiday**  
240 & 246-Day Employee Workday

18

**Student Holiday**  
School Work Day for High Schools and District Staff  
Development Day for Elementary and Middle Schools

19

Report Cards Issued  
Support Staff Cabinet, 3:00 p.m.

20

25

Student Cabinet, 1:00 p.m.  
Child Find Screenings @ MBFLC & CEC

26

27

Board Mtg., 6 p.m. @ ATA

### DECEMBER 2009

S	M	T	W	T	F	S
		1	2	3	4	5
6	7	8	9	10	11	12
13	14	15	16	17	18	19
20	21	22	23	24	25	26
27	28	29	30	31		

### FEBRUARY 2010

S	M	T	W	T	F	S
	1	2	3	4	5	6
7	8	9	10	11	12	13
14	15	16	17	18	19	20
21	22	23	24	25	26	27
28						

# January

2010

**THURSDAY**

**FRIDAY**

**SAT/SUN**

	1 Winter Break - Dec. 21 - Jan 1 Schools & Offices Closed	2
		3
New Hire Orientation Class, 8:30 a.m. 7	8	9
		10
New Hire Orientation Class, 8:30 a.m. 14	PAY DAY 2 1/2 Hours Early Dismissal for Students End 2nd Quarter -90 days Report Cards Issued (Daisy) 15	16
		17
New Hire Orientation Class, 8:30 a.m. 21 Teacher Forum, 2:30 p.m. Teacher Cabinet, 3:30 p.m. Parent Cabinet, 6:00 p.m. All County Orchestra Clinic @ Myrtle Beach High	All County Orchestra Clinic Concert @ 5:45 p.m., Myrtle Beach High 22	23
		24
New Hire Orientation Class, 8:30 a.m. 28 Assistant Principals' Safety Mtg., 3:30 - 5:00 pm @ District Office	PAY DAY All County Chorus Clinic @ Loris High 29	All County Chorus Clinic Concert @ 5:00 p.m. Loris High 30
		31

**School Board  
Appreciation Month**



**Any non-instructional  
day, including Saturdays,  
may be considered as a  
school cancellation  
make-up day.**

# MONDAY

# TUESDAY

# WEDNESDAY

## TESTING

**Feb. 6**  
ACT Testing, Grs. 11 & 12

**Feb. 22 - March 26**  
English Language  
Development Assessment  
(ELDA), Grs. 1-12

1

Child Find Screenings @ CEC 2

3

Board Work Session, 6 p.m.,  
Location TBD

Cafeteria Managers' Mtg.,  
8:30-11:00 am @ District Office 8

Child Find Screenings @  
MBFLC 9

Principal Cabinet, 7 a.m.  
A-Team Mtg., 8 a.m. 10

**Student Holiday** 15  
AM - School Work Day /  
PM District Staff Development Day

16

Interim Reports Issued  
(Daisy) 17

Board Mtg., 6 p.m. @ ATA

22

Child Find Screenings  
@ MBFLC & CEC 23

24

### JANUARY 2010

S	M	T	W	T	F	S
					1	2
3	4	5	6	7	8	9
10	11	12	13	14	15	16
17	18	19	20	21	22	23
24	25	26	27	28	29	30
31						

### MARCH 2010

S	M	T	W	T	F	S
	1	2	3	4	5	6
7	8	9	10	11	12	13
14	15	16	17	18	19	20
21	22	23	24	25	26	27
28	29	30	31			

# February 2010

## THURSDAY

## FRIDAY

## SAT/SUN

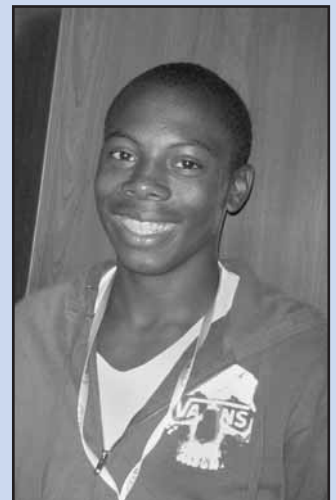
New Hire Orientation Class, 8:30 a.m. 4	5	6
		7
New Hire Orientation Class, 8:30 a.m. 11 All County Band Clinic @ Myrtle Beach High End Date for 3rd Interim Report (Daisy)	PAY DAY All County Band Clinic Concert @ 5:45 p.m., @ Myrtle Beach High 12	JROTC Military Ball 13
		14
New Hire Orientation Class, 8:30 a.m. 18	End Date for 3rd Interim Report 19	20
		21
Interim Reports Issued New Hire Orientation Class, 8:30 a.m. 25	PAY DAY 26	27
		28

**National African  
American History Month**

**National School  
Counseling Week**  
Feb. 8-12

**National FCCLA Week**  
Feb. 14-20

**National FFA Week**  
Feb. 20-27



**Any non-instructional day,  
including Saturdays, may  
be considered as a school  
cancellation make-up day.**

- Workers' Compensation claims must be reported to the District Office within 24 hours of accident/injury.
- Fire drills must be conducted monthly and reported to the Office of Support Services.
- New employees must attend a New Hire Orientation prior to reporting to work. Register for the orientation by calling 488-6866.

# MONDAY

# TUESDAY

# WEDNESDAY

## TESTING

### March 6

SAT Testing, Grs. 11 & 12

### March 8 - 19

STAR Performance Test,  
Grs. 2, 3, 4, & 5

### March 8 - April 30

SC-Alt Testing

### Feb. 22 - March 26

English Language  
Development Assessment  
(ELDA), Grs. 1-12

### March 16 - 17

PASS Testing, Writing,  
Grs. 3-8

### March 18 - 23

PASS Testing, Writing  
Makeups, Grs. 3-8

### FEBRUARY 2010

S	M	T	W	T	F	S
	1	2	3	4	5	6
7	8	9	10	11	12	13
14	15	16	17	18	19	20
21	22	23	24	25	26	27
28						

### APRIL 2010

S	M	T	W	T	F	S
				1	2	3
4	5	6	7	8	9	10
11	12	13	14	15	16	17
18	19	20	21	22	23	24
25	26	27	28	29	30	

1

Child Find Screenings @ CEC

2

3

Board Work Session, 6 p.m.,  
Location TBD

Assistant Cafeteria Managers'  
Mtg., 8:30-11:00 a.m. @ DO

8

Substitute Workshop  
Child Find Screenings @  
MBFLC

9

Principal Cabinet, 7 a.m.  
A-Team Mtg., 8 a.m.

10

PAY DAY

15

Child Find Screenings @  
CEC.

16

Business Cabinet, 11:30 a.m.  
End 3rd Quarter - 135 days  
(Daisy).

17

Board Mtg., 6 p.m. @ ATA

22

Report Cards Issued (Daisy)  
Child Find Screenings @  
MBFLC

23

End 3rd Quarter - 135 days

24

29

Spring Break  
Schools & Offices Closed

30

31

# March 2010

## THURSDAY

## FRIDAY

## SAT/SUN

New Hire Orientation Class, 8:30 a.m.	4		5		6
					7
New Hire Orientation Class, 8:30 a.m.	11	ADEPT - Final Evaluation Ends	12		13
				Daylight Savings Time	14
New Hire Orientation Class, 8:30 a.m.	18		19		20
					21
New Hire Orientation Class, 8:30 a.m.	25	PAY DAY	26		27
					28

Music In Our Schools Month

Youth Art Month

National School Breakfast  
Week - March 8-12

National Foreign Language  
Week - March 8-14

NEA's Read Across America  
March 2



- Workers' Compensation claims must be reported to the District Office within 24 hours of accident / injury.
- Fire drills must be conducted monthly and reported to Support Services.
- New employees must attend a New Hire Orientation prior to reporting to work. Register for the orientation by calling 488-6866.

# MONDAY

# TUESDAY

# WEDNESDAY

## TESTING

**April 10**  
ACT Testing, Grs. 11 & 12

**April 20 - 22**  
HSAP Testing

**April 23 - 30**  
HSAP Make-ups

**April 6 - 23**  
MAP Norm Reference  
Achievement Test,  
Grs. 2-9

**March 8 - April 30**  
SC-ALT Testing

- Workers' Compensation claims must be reported to the District Office within 24 hours of accident / injury.
- Fire drills must be conducted monthly and reported to Support Services.
- New employees must attend a New Hire Orientation prior to reporting to work. Register for the orientation by calling 488-6866.

5

Report Cards Issued  
New student Transfer Forms  
for 2010-2011 available

6

7

**Spring Break**  
**Schools & Offices Closed** -----

Cafeteria Manager's Mtg.  
8:30-11:30 a.m. @  
District Office

12

Child Find Screenings @  
CEC  
Student Cabinet Mtg., 9:00 a.m.

13

Principal Cabinet, 7 a.m.  
A-Team Mtg., 8 a.m.

14

NSBA Annual Conference-----

19

Child Find Screenings @  
MBFLC

20

Support Staff Cabinet,  
3:00 p.m.  
Administrative Professionals' Day

21

Board Work Session & Regular  
Mtg., 6 p.m., @ ATA

26

Child Find Screenings  
@ CEC

27

28

### MARCH 2010

S	M	T	W	T	F	S
	1	2	3	4	5	6
7	8	9	10	11	12	13
14	15	16	17	18	19	20
21	22	23	24	25	26	27
28	29	30	31			

### MAY 2010

S	M	T	W	T	F	S
						1
2	3	4	5	6	7	8
9	10	11	12	13	14	15
16	17	18	19	20	21	22
23	24	25	26	27	28	29
30	31					

# April 2010

**THURSDAY**

**FRIDAY**

**SAT/SUN**

1	2	3
Spring Break Schools & Offices Closed		
		4
New Hire Orientation Class, 8:30 a.m.	8	9
	Baby Animal Day @ Playcard	10
		NSBA Annual Conference
		11
		NSBA Annual Conference
PAY DAY	15	16
		17
		18
Assistant Principals Safety Mtg., 3:30-5:00 p.m. @ DO	22	23
Teacher Forum, 2:30 p.m.		24
Teacher Cabinet, 3:30 p.m.		
Parent Cabinet, 6:00 p.m.		25
29	PAY DAY End Date for 4th Interim Report (Daisy)	30
		May 1
		2

**National Library Week**  
April 4-10

**National Student  
Leadership Week**  
April 11-17

**Volunteer Week**  
April 18-24



# MONDAY

# TUESDAY

# WEDNESDAY

## TESTING

### May 1

SAT Testing, Grs. 11 & 12

### May 3-7 & 10-14

AP Exams, Grs. 11 & 12

### May 4

Writing Assessment, Grs. 1 & 2

### May 5

Writing Assessment Makeups

### May 11 - 17

PASS Testing, Grs. 3-8

### May 14, & 17-21

Pass Testing Makeups

### May 20 - June 2

PALS/DIBELS Testing,  
Grs. CD-1

### May 24 - June 4

State End-of-Course Exam,  
Algebra I, MathTech 2, English I,  
Physical Science; US History &  
Constitution, & Biology

### APRIL 2010

S	M	T	W	T	F	S
				1	2	3
4	5	6	7	8	9	10
11	12	13	14	15	16	17
18	19	20	21	22	23	24
25	26	27	28	29	30	

### JUNE 2010

S	M	T	W	T	F	S
		1	2	3	4	5
6	7	8	9	10	11	12
13	14	15	16	17	18	19
20	21	22	23	24	25	26
27	28	29	30			

2010-11 Superintendent's  
Comprehensive Budget to Board  
End Date for 4th Interim Report **3**

Child Find Screenings @ CEC **4**

Principal Cabinet, 7 a.m.  
A-Team Mtg., 8 a.m. **5**

Board Work Session- 6 p.m.,  
Location TBD

Teacher of the Year Banquet, 6:00 p.m.

Cafeteria Managers' Mtg.,  
8:30-11:00 a.m. @ DO **10**

Child Find Screenings @  
MBFLC **11**

National School Nurse Day **12**

**17**

Child Find Screenings  
@ CEC **18**

Educational Bosses' Day **19**

Board Mtg., 6 p.m. @ ATA

**24**

**25**

**26**

**Student Holiday**  
246-Day Employee Workday **31**

# May 2010

## THURSDAY

## FRIDAY

## SAT/SUN

Interim Reports Issued (Daisy) 6	Interim Reports Issued 7	8
		9
Principals' Shelter Liaison Mtg., 3:30-4:30 p.m. 13	PAY DAY 14	15
		16
20	21	22
		23
Assistant Principals' Safety Mtg., 3:30-5:00 p.m. 27	PAY DAY Cut-off for out-of-state purchases (except contracted vendors) 28	29
		30
Adult Education Graduation, 6 p.m.		

Better Hearing & Speech Month

Employee Appreciation Week - May 3-7

National Physical Education & Sports Week - May 1-7

National Children's Book Week - May 10-16



- Workers' Compensation claims must be reported to the District Office within 24 hours of accident/ injury.
- New employees must attend a New Hire Orientation prior to reporting to work. Register for the orientation by calling 488-6866.
- Fire drills must be conducted monthly & reported to the Office of Support Services

# MONDAY

# TUESDAY

# WEDNESDAY

## TESTING

**May 20 - June 2**  
PALS/DIBELS Testing,  
Grs. CD-1

**May 26 - June 4**  
State End-of-Course  
Exam, Algebra I, MathTech  
2, English I, Physical  
Science, US History &  
Constitution, & Biology

**June 5**  
SAT Testing, Grs. 11 & 12

**June 12**  
ACT Testing, Grs. 11 & 12

### MAY 2010

S	M	T	W	T	F	S
						1
2	3	4	5	6	7	8
9	10	11	12	13	14	15
16	17	18	19	20	21	22
23	24	25	26	27	28	29
30	31					

### JULY 2010

S	M	T	W	T	F	S
				1	2	3
4	5	6	7	8	9	10
11	12	13	14	15	16	17
18	19	20	21	22	23	24
25	26	27	28	29	30	31

Child Find Screenings @  
MBFLC & CEC

1

2

Public Hearing on 2010-11  
Superintendent's  
Comprehensive Budget  
School Work Day  
JROTC Summer Camp Begins

7

Final Report Cards Issued  
(Traditional Calendar & Daisy)  
School Work Day (If Parent/Teacher  
Conferences not conducted during  
school year)

8

Principals' Cabinet, 7 a.m.  
A-Team Mtg., 8 a.m.  
Retirement Seminar- all day

9

Board Work Session, 6 p.m.,  
Location TBD

Retirement Reception

14

PAY DAY

15

Cut-off for in-state purchases  
(including contract vendors)

16

21

22

Cut-off for in-district  
purchases (including  
purchasing cards)

23

Board Mtg., 6 p.m. @ ATA (if needed)

28

29

PAY DAY

30

# June

2010

## THURSDAY

## FRIDAY

## SAT/SUN

<p>2 1/2 Hours Early Dismissal for Students End 4th Quarter - 180 days (Daisy)</p> <p style="text-align: right;">3</p>	<p>Last Day of School 2 1/2 Hours Early Dismissal for Students End 4th Quarter -180 days</p> <p style="text-align: right;">4</p>	<p style="text-align: right;">5</p> <hr/> <p style="text-align: right;">6</p>
<p style="text-align: center;">10</p>	<p style="text-align: center;">11</p>	<p style="text-align: right;">12</p> <hr/> <p style="text-align: right;">13</p>
<p style="text-align: center;">17</p>	<p style="text-align: center;">18</p>	<p style="text-align: right;">19</p> <hr/> <p style="text-align: right;">20</p>
<p style="text-align: center;">24</p>	<p style="text-align: center;">25</p>	<p style="text-align: right;">26</p> <hr/> <p style="text-align: right;">27</p>



- Workers' Compensation claims must be reported to the District Office within 24 hours of accident / injury.
- Fire drills must be conducted monthly and reported to Support Services.
- New employees must attend a New Hire Orientation prior to reporting to work. Register for the orientation by calling 488-6866.

**Any non-instructional day, including Saturdays, may be considered as a school cancellation make-up day.**

# MONDAY

# TUESDAY

# WEDNESDAY

## TESTING

**July 20 - 22**  
 Summer HSAP Exit Exam,  
 Gr. 12

- Workers' Compensation claims must be reported to the District Office within 24 hours of accident / injury.
- Fire drills must be conducted monthly and reported to Support Services.
- New employees must attend a New Hire Orientation prior to reporting to work. Register for the Orientation by calling 488-6866.
- **Reconcile closed and roll-over purchase orders with Accounts Payable**

Enter requisitions for new  
 year annual purchase orders

5

6

7

12

13

14

19

20

21

26

Child Find Screening @  
 MBFLC

27

28

### JUNE 2010

S	M	T	W	T	F	S
		1	2	3	4	5
6	7	8	9	10	11	12
13	14	15	16	17	18	19
20	21	22	23	24	25	26
27	28	29	30			

### AUGUST 2010

S	M	T	W	T	F	S
1	2	3	4	5	6	7
8	9	10	11	12	13	14
15	16	17	18	19	20	21
22	23	24	25	26	27	28
29	30	31				

# July 2010

THURSDAY

FRIDAY

SAT/SUN

1

2

3

4

8

9

10

11

PAY DAY

15

16

17

18

22

23

24

25

PAY DAY

29

30

31



<p><i>August 2010</i></p> <table border="1"> <thead> <tr><th>S</th><th>M</th><th>T</th><th>W</th><th>T</th><th>F</th><th>S</th></tr> </thead> <tbody> <tr><td>1</td><td>2</td><td>3</td><td>4</td><td>5</td><td>6</td><td>7</td></tr> <tr><td>8</td><td>9</td><td>10</td><td>11</td><td>12</td><td>13</td><td>14</td></tr> <tr><td>15</td><td>16</td><td>17</td><td>18</td><td>19</td><td>20</td><td>21</td></tr> <tr><td>22</td><td>23</td><td>24</td><td>25</td><td>26</td><td>27</td><td>28</td></tr> <tr><td>29</td><td>30</td><td>31</td><td></td><td></td><td></td><td></td></tr> </tbody> </table>							S	M	T	W	T	F	S	1	2	3	4	5	6	7	8	9	10	11	12	13	14	15	16	17	18	19	20	21	22	23	24	25	26	27	28	29	30	31					<p><i>September 2010</i></p> <table border="1"> <thead> <tr><th>S</th><th>M</th><th>T</th><th>W</th><th>T</th><th>F</th><th>S</th></tr> </thead> <tbody> <tr><td></td><td></td><td></td><td>1</td><td>2</td><td>3</td><td>4</td></tr> <tr><td>5</td><td>6</td><td>7</td><td>8</td><td>9</td><td>10</td><td>11</td></tr> <tr><td>12</td><td>13</td><td>14</td><td>15</td><td>16</td><td>17</td><td>18</td></tr> <tr><td>19</td><td>20</td><td>21</td><td>22</td><td>23</td><td>24</td><td>25</td></tr> <tr><td>26</td><td>27</td><td>28</td><td>29</td><td>30</td><td></td><td></td></tr> </tbody> </table>							S	M	T	W	T	F	S				1	2	3	4	5	6	7	8	9	10	11	12	13	14	15	16	17	18	19	20	21	22	23	24	25	26	27	28	29	30			<p><i>October 2010</i></p> <table border="1"> <thead> <tr><th>S</th><th>M</th><th>T</th><th>W</th><th>T</th><th>F</th><th>S</th></tr> </thead> <tbody> <tr><td></td><td></td><td></td><td></td><td></td><td></td><td>1 2</td></tr> <tr><td>3</td><td>4</td><td>5</td><td>6</td><td>7</td><td>8</td><td>9</td></tr> <tr><td>10</td><td>11</td><td>12</td><td>13</td><td>14</td><td>15</td><td>16</td></tr> <tr><td>17</td><td>18</td><td>19</td><td>20</td><td>21</td><td>22</td><td>23</td></tr> <tr><td>24</td><td>25</td><td>26</td><td>27</td><td>28</td><td>29</td><td>30</td></tr> <tr><td>31</td><td></td><td></td><td></td><td></td><td></td><td></td></tr> </tbody> </table>							S	M	T	W	T	F	S							1 2	3	4	5	6	7	8	9	10	11	12	13	14	15	16	17	18	19	20	21	22	23	24	25	26	27	28	29	30	31						
S	M	T	W	T	F	S																																																																																																																																																			
1	2	3	4	5	6	7																																																																																																																																																			
8	9	10	11	12	13	14																																																																																																																																																			
15	16	17	18	19	20	21																																																																																																																																																			
22	23	24	25	26	27	28																																																																																																																																																			
29	30	31																																																																																																																																																							
S	M	T	W	T	F	S																																																																																																																																																			
			1	2	3	4																																																																																																																																																			
5	6	7	8	9	10	11																																																																																																																																																			
12	13	14	15	16	17	18																																																																																																																																																			
19	20	21	22	23	24	25																																																																																																																																																			
26	27	28	29	30																																																																																																																																																					
S	M	T	W	T	F	S																																																																																																																																																			
						1 2																																																																																																																																																			
3	4	5	6	7	8	9																																																																																																																																																			
10	11	12	13	14	15	16																																																																																																																																																			
17	18	19	20	21	22	23																																																																																																																																																			
24	25	26	27	28	29	30																																																																																																																																																			
31																																																																																																																																																									
<p><i>November 2010</i></p> <table border="1"> <thead> <tr><th>S</th><th>M</th><th>T</th><th>W</th><th>T</th><th>F</th><th>S</th></tr> </thead> <tbody> <tr><td></td><td>1</td><td>2</td><td>3</td><td>4</td><td>5</td><td>6</td></tr> <tr><td>7</td><td>8</td><td>9</td><td>10</td><td>11</td><td>12</td><td>13</td></tr> <tr><td>14</td><td>15</td><td>16</td><td>17</td><td>18</td><td>19</td><td>20</td></tr> <tr><td>21</td><td>22</td><td>23</td><td>24</td><td>25</td><td>26</td><td>27</td></tr> <tr><td>28</td><td>29</td><td>30</td><td></td><td></td><td></td><td></td></tr> </tbody> </table>							S	M	T	W	T	F	S		1	2	3	4	5	6	7	8	9	10	11	12	13	14	15	16	17	18	19	20	21	22	23	24	25	26	27	28	29	30					<p><i>December 2010</i></p> <table border="1"> <thead> <tr><th>S</th><th>M</th><th>T</th><th>W</th><th>T</th><th>F</th><th>S</th></tr> </thead> <tbody> <tr><td></td><td></td><td></td><td>1</td><td>2</td><td>3</td><td>4</td></tr> <tr><td>5</td><td>6</td><td>7</td><td>8</td><td>9</td><td>10</td><td>11</td></tr> <tr><td>12</td><td>13</td><td>14</td><td>15</td><td>16</td><td>17</td><td>18</td></tr> <tr><td>19</td><td>20</td><td>21</td><td>22</td><td>23</td><td>24</td><td>25</td></tr> <tr><td>26</td><td>27</td><td>28</td><td>29</td><td>30</td><td>31</td><td></td></tr> </tbody> </table>							S	M	T	W	T	F	S				1	2	3	4	5	6	7	8	9	10	11	12	13	14	15	16	17	18	19	20	21	22	23	24	25	26	27	28	29	30	31		<p><i>January 2011</i></p> <table border="1"> <thead> <tr><th>S</th><th>M</th><th>T</th><th>W</th><th>T</th><th>F</th><th>S</th></tr> </thead> <tbody> <tr><td></td><td></td><td></td><td></td><td></td><td></td><td>1</td></tr> <tr><td>2</td><td>3</td><td>4</td><td>5</td><td>6</td><td>7</td><td>8</td></tr> <tr><td>9</td><td>10</td><td>11</td><td>12</td><td>13</td><td>14</td><td>15</td></tr> <tr><td>16</td><td>17</td><td>18</td><td>19</td><td>20</td><td>21</td><td>22</td></tr> <tr><td>23</td><td>24</td><td>25</td><td>26</td><td>27</td><td>28</td><td>29</td></tr> <tr><td>30</td><td>31</td><td></td><td></td><td></td><td></td><td></td></tr> </tbody> </table>							S	M	T	W	T	F	S							1	2	3	4	5	6	7	8	9	10	11	12	13	14	15	16	17	18	19	20	21	22	23	24	25	26	27	28	29	30	31					
S	M	T	W	T	F	S																																																																																																																																																			
	1	2	3	4	5	6																																																																																																																																																			
7	8	9	10	11	12	13																																																																																																																																																			
14	15	16	17	18	19	20																																																																																																																																																			
21	22	23	24	25	26	27																																																																																																																																																			
28	29	30																																																																																																																																																							
S	M	T	W	T	F	S																																																																																																																																																			
			1	2	3	4																																																																																																																																																			
5	6	7	8	9	10	11																																																																																																																																																			
12	13	14	15	16	17	18																																																																																																																																																			
19	20	21	22	23	24	25																																																																																																																																																			
26	27	28	29	30	31																																																																																																																																																				
S	M	T	W	T	F	S																																																																																																																																																			
						1																																																																																																																																																			
2	3	4	5	6	7	8																																																																																																																																																			
9	10	11	12	13	14	15																																																																																																																																																			
16	17	18	19	20	21	22																																																																																																																																																			
23	24	25	26	27	28	29																																																																																																																																																			
30	31																																																																																																																																																								
<p><i>February 2011</i></p> <table border="1"> <thead> <tr><th>S</th><th>M</th><th>T</th><th>W</th><th>T</th><th>F</th><th>S</th></tr> </thead> <tbody> <tr><td></td><td></td><td></td><td>1</td><td>2</td><td>3</td><td>4 5</td></tr> <tr><td>6</td><td>7</td><td>8</td><td>9</td><td>10</td><td>11</td><td>12</td></tr> <tr><td>13</td><td>14</td><td>15</td><td>16</td><td>17</td><td>18</td><td>19</td></tr> <tr><td>20</td><td>21</td><td>22</td><td>23</td><td>24</td><td>25</td><td>26</td></tr> <tr><td>27</td><td>28</td><td></td><td></td><td></td><td></td><td></td></tr> </tbody> </table>							S	M	T	W	T	F	S				1	2	3	4 5	6	7	8	9	10	11	12	13	14	15	16	17	18	19	20	21	22	23	24	25	26	27	28						<p><i>March 2011</i></p> <table border="1"> <thead> <tr><th>S</th><th>M</th><th>T</th><th>W</th><th>T</th><th>F</th><th>S</th></tr> </thead> <tbody> <tr><td></td><td></td><td></td><td>1</td><td>2</td><td>3</td><td>4 5</td></tr> <tr><td>6</td><td>7</td><td>8</td><td>9</td><td>10</td><td>11</td><td>12</td></tr> <tr><td>13</td><td>14</td><td>15</td><td>16</td><td>17</td><td>18</td><td>19</td></tr> <tr><td>20</td><td>21</td><td>22</td><td>23</td><td>24</td><td>25</td><td>26</td></tr> <tr><td>27</td><td>28</td><td>29</td><td>30</td><td>31</td><td></td><td></td></tr> </tbody> </table>							S	M	T	W	T	F	S				1	2	3	4 5	6	7	8	9	10	11	12	13	14	15	16	17	18	19	20	21	22	23	24	25	26	27	28	29	30	31			<p><i>April 2011</i></p> <table border="1"> <thead> <tr><th>S</th><th>M</th><th>T</th><th>W</th><th>T</th><th>F</th><th>S</th></tr> </thead> <tbody> <tr><td></td><td></td><td></td><td></td><td></td><td></td><td>1 2</td></tr> <tr><td>3</td><td>4</td><td>5</td><td>6</td><td>7</td><td>8</td><td>9</td></tr> <tr><td>10</td><td>11</td><td>12</td><td>13</td><td>14</td><td>15</td><td>16</td></tr> <tr><td>17</td><td>18</td><td>19</td><td>20</td><td>21</td><td>22</td><td>23</td></tr> <tr><td>24</td><td>25</td><td>26</td><td>27</td><td>28</td><td>29</td><td>30</td></tr> </tbody> </table>							S	M	T	W	T	F	S							1 2	3	4	5	6	7	8	9	10	11	12	13	14	15	16	17	18	19	20	21	22	23	24	25	26	27	28	29	30							
S	M	T	W	T	F	S																																																																																																																																																			
			1	2	3	4 5																																																																																																																																																			
6	7	8	9	10	11	12																																																																																																																																																			
13	14	15	16	17	18	19																																																																																																																																																			
20	21	22	23	24	25	26																																																																																																																																																			
27	28																																																																																																																																																								
S	M	T	W	T	F	S																																																																																																																																																			
			1	2	3	4 5																																																																																																																																																			
6	7	8	9	10	11	12																																																																																																																																																			
13	14	15	16	17	18	19																																																																																																																																																			
20	21	22	23	24	25	26																																																																																																																																																			
27	28	29	30	31																																																																																																																																																					
S	M	T	W	T	F	S																																																																																																																																																			
						1 2																																																																																																																																																			
3	4	5	6	7	8	9																																																																																																																																																			
10	11	12	13	14	15	16																																																																																																																																																			
17	18	19	20	21	22	23																																																																																																																																																			
24	25	26	27	28	29	30																																																																																																																																																			
<p><i>May 2011</i></p> <table border="1"> <thead> <tr><th>S</th><th>M</th><th>T</th><th>W</th><th>T</th><th>F</th><th>S</th></tr> </thead> <tbody> <tr><td>1</td><td>2</td><td>3</td><td>4</td><td>5</td><td>6</td><td>7</td></tr> <tr><td>8</td><td>9</td><td>10</td><td>11</td><td>12</td><td>13</td><td>14</td></tr> <tr><td>15</td><td>16</td><td>17</td><td>18</td><td>19</td><td>20</td><td>21</td></tr> <tr><td>22</td><td>23</td><td>24</td><td>25</td><td>26</td><td>27</td><td>28</td></tr> <tr><td>29</td><td>30</td><td>31</td><td></td><td></td><td></td><td></td></tr> </tbody> </table>							S	M	T	W	T	F	S	1	2	3	4	5	6	7	8	9	10	11	12	13	14	15	16	17	18	19	20	21	22	23	24	25	26	27	28	29	30	31					<p><i>June 2011</i></p> <table border="1"> <thead> <tr><th>S</th><th>M</th><th>T</th><th>W</th><th>T</th><th>F</th><th>S</th></tr> </thead> <tbody> <tr><td></td><td></td><td></td><td>1</td><td>2</td><td>3</td><td>4</td></tr> <tr><td>5</td><td>6</td><td>7</td><td>8</td><td>9</td><td>10</td><td>11</td></tr> <tr><td>12</td><td>13</td><td>14</td><td>15</td><td>16</td><td>17</td><td>18</td></tr> <tr><td>19</td><td>20</td><td>21</td><td>22</td><td>23</td><td>24</td><td>25</td></tr> <tr><td>26</td><td>27</td><td>28</td><td>29</td><td>30</td><td></td><td></td></tr> </tbody> </table>							S	M	T	W	T	F	S				1	2	3	4	5	6	7	8	9	10	11	12	13	14	15	16	17	18	19	20	21	22	23	24	25	26	27	28	29	30			<p><i>July 2011</i></p> <table border="1"> <thead> <tr><th>S</th><th>M</th><th>T</th><th>W</th><th>T</th><th>F</th><th>S</th></tr> </thead> <tbody> <tr><td></td><td></td><td></td><td></td><td></td><td></td><td>1 2</td></tr> <tr><td>3</td><td>4</td><td>5</td><td>6</td><td>7</td><td>8</td><td>9</td></tr> <tr><td>10</td><td>11</td><td>12</td><td>13</td><td>14</td><td>15</td><td>16</td></tr> <tr><td>17</td><td>18</td><td>19</td><td>20</td><td>21</td><td>22</td><td>23</td></tr> <tr><td>24</td><td>25</td><td>26</td><td>27</td><td>28</td><td>29</td><td>30</td></tr> <tr><td>31</td><td></td><td></td><td></td><td></td><td></td><td></td></tr> </tbody> </table>							S	M	T	W	T	F	S							1 2	3	4	5	6	7	8	9	10	11	12	13	14	15	16	17	18	19	20	21	22	23	24	25	26	27	28	29	30	31						
S	M	T	W	T	F	S																																																																																																																																																			
1	2	3	4	5	6	7																																																																																																																																																			
8	9	10	11	12	13	14																																																																																																																																																			
15	16	17	18	19	20	21																																																																																																																																																			
22	23	24	25	26	27	28																																																																																																																																																			
29	30	31																																																																																																																																																							
S	M	T	W	T	F	S																																																																																																																																																			
			1	2	3	4																																																																																																																																																			
5	6	7	8	9	10	11																																																																																																																																																			
12	13	14	15	16	17	18																																																																																																																																																			
19	20	21	22	23	24	25																																																																																																																																																			
26	27	28	29	30																																																																																																																																																					
S	M	T	W	T	F	S																																																																																																																																																			
						1 2																																																																																																																																																			
3	4	5	6	7	8	9																																																																																																																																																			
10	11	12	13	14	15	16																																																																																																																																																			
17	18	19	20	21	22	23																																																																																																																																																			
24	25	26	27	28	29	30																																																																																																																																																			
31																																																																																																																																																									



# Horry County Schools

P.O. Box 260005 • 1605 Horry Street • Conway, SC 29527  
 Telephone: (843) 488-6700 • Fax: (843) 488-6722

Dr. Cindy Elsberry, Superintendent

[www.horrycountyschools.net](http://www.horrycountyschools.net)

Horry County Schools does not discriminate on the basis of race, religion, color, national origin, sex, disability, age, immigrant status, English-speaking status, or any other characteristic protected by applicable federal or S.C. law in its programs or activities. For questions regarding the nondiscrimination policies, please call 843-488-6993, Horry County Schools, 1605 Horry Street, Conway, SC 29527.