



SCHOLARS ACADEMY HIGH SCHOOL WEEKLY ANNOUNCEMENTS August 5, 2022

Back To School—Open House

August 9—Returning Students and Parents

6:00-7:00 Commons Area

August 11—Freshman and Parents 6:00-7:30

Common/Classrooms

Sessions will include updates to the Student Handbook, safety protocols, time to meet teachers, as well as pick up textbooks, computers...so students are ready to start the first day of school on August 15th. Anyone who cannot attend may pick up their supplies the day following their Open House. We will not have items ready before the sessions.

CCU TEXTBOOKS

CCU will be moving to a new textbook distribution system called **First Day Complete**. Here is CCU's press release about the program.

<https://www.coastal.edu/ccustories/news/news-article/index.php?id=5458>

SA students will receive more information the first week of SA classes about how to receive their CCU books. SA students will go to the bookstore on Wednesday, August 17th from 10:00-12:00 to pick up any needed materials that are not digital.

FRESHMAN CCU ACCOUNTS

Freshman may receive an email from CCU regarding setting up their CCU accounts. Please save the email and the contents. We will assist with this process the first week of school.

CCU Parking Passes

Students may order parking passes online. See CCU website. SA students do not have to pay for parking passes. If you have questions, please contact CCU Public Safety.

School Building Hours

SA will return to regular school hours, 7:30-3:30, on August 8th.

DRESS CODE AND SCHOOL SUPPLIES

Attached are school supply lists for all teachers so families can take care of tax-free shopping. Please be aware of school dress codes when purchasing clothing. EVERYONE (male and female) needs to be aware of appropriate lengths of shorts. We will still use the “Dollar Bill Rule” for length.

COMMUNITY SERVICE

For those who have completed Community Service hours this summer, you can go ahead and submit the information. Here is the [link](#) if you need it. You must use your g.horrycountyschools.net email address to submit hours. You are allowed to submit 8 hours during the summer, so you still have some time to get some hours in before we return to school. All summer hours are due by the last school day in August.

Scholars Academy Apparel

Get yours now!



Lots of Options - Colors, Designs
Customizable with Graduation Year (if Desired)

Shirts, Hoodies,
Sweatpants,
Performance Wear,
Hats, Bags,
Accessories...

Sizes running from infants to XXXL!

Suggest ordering a size larger than normal as some products run a little small!

12% of every sale goes to the Scholars Academy PTSO

To Order:

<https://apparelnow.com/scholars-academy-gear>



SCAN ME

ENRICHMENT OPPORTUNITY



Established in 1988, the Center for Gifted Education (CFGE) at William & Mary is a learning community that values and fosters the talent development process and optional functioning of high-ability individuals over their lifespan.

Focusing on the Future:

A Career and Academic Planning Event

September 24th, 2022



A career and academic planning experience for high-ability students (grades 6–12), parents, and school counselors.

This event is to:

- expose high-ability learners to diverse career opportunities
- inform parents and counselors on effective career and academic planning.

Student Workshops:

Separate concurrent sessions are offered for middle and high school students. Students will be exposed to (a) information about work habits and “habits of

mind” that lead to successful careers in various fields, (b) interactive discussions about a variety of career opportunities, and (c) steps to take in preparation for specific careers.

Parent(s) and Counselor Workshops:

Parents and Counselors will have the opportunity to attend multiple workshops to assist them in guiding their children with academic and career planning.

[More Information](#)

HOW TO EMAIL A TEACHER OR PROFESSOR

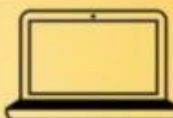
HOW TO EMAIL A TEACHER

1 SUBJECT LINE
2-5 word summary of the email

- Missing Grade
- Homework Question
- Late Work

4 CLOSING


- Thank you
- Have a nice day!



2 BEGIN WITH A GREETING

- Good Morning
- Hello
- Good Afternoon

This is in the body of the email



5 SIGN YOUR NAME!

3 BODY OF THE EMAIL

- I am writing because.....
- I need help help.....
- I am confused by.....

General Tips:

- Be sure to use proper capitalization & punctuation.
- Always use proper grammar.
- Plz spell out ur words.
 - Please spell out your words.



Are you eager to improve math and science education around the world?
Do you speak any language other than English or Spanish that can increase [PhET Translations](#)?

PhET Trusted Translators are math and science educators familiar with PhET simulations who are committed to supporting access and impact of PhET simulations by:

1. supporting localization through language and culture
2. being part of a network that understands the nuance of verbal and nonverbal communication about math and science in different languages and contexts

While anyone can request translation access as a [PhET Trusted Translator](#), the PhET Translator Network is a special opportunity to receive support and be part of a connected community. The PhET Translator Network follows a 3-month cycle in which new members are inducted through technical training in the use of the translation website, developing personal translation goals, completing translations, and passing through quality assurance with a peer. Participants may elect to commit as little or as much time as they desire—PhET simulations take on average 30 minutes to 2 hours to translate.

Members of the PhET Translator Network are recognized for their contributions and have opportunities to receive a digital certificate verifying their hours, letters of recommendation, opportunities to connect with other translators, and the chance to be featured on the PhET webpage and in the PhET newsletter.

The Translator Network will be run in separate English and Spanish cohorts.
Begin your application today!

[Apply to the PhET Translator Network](#)

* Applications due 1 September 2022

Information Sessions (optional)

English Session: August 10, [1 PM GMT](#) ← click to see your time

[Register Here](#)

Spanish Session: August 17, [5 PM GMT](#) ← click to see your time

[Register Here](#)

Who is eligible to become a member of the PhET Translator Network?

- Formal and **informal** math and science educators.
- Reading fluency in English and at least one other language. **Note: PhET does not need English-Spanish translation. However, we welcome Spanish speakers who speak indigenous or other languages.*
- Access to a computer and PhET's website.

What language translations would PhET like to prioritize?

PhET is working toward covering as many languages as possible. (*At this time, PhET can only support languages on the [two-letter ISO 639-1 list](#).)* PhET is particularly interested in acquiring support for the translation of HTML5 simulations, Teacher Tips, and the website, including our new [Virtual Workshops](#).

What dates and times will the PhET Translator Network meet?

Dates and times will be determined based on the geographic location of applicants. All training sessions will be recorded and shared for those who cannot attend, and all members will be connected asynchronously via a WhatsApp group.

Application Deadline: 1 September 2022 (11:59 PM, applicant's local time)

Questions? Reach out to phet-global@colorado.edu.

IT'S OKAY TO ASK FOR HELP



Care Solace connects students, staff, and their families to care. At no cost to you, Care Solace will quickly and confidentially find available mental health and substance use providers matched to your needs.

Find the right help at the right time.



24/7/365 MULTILINGUAL SUPPORT

A multilingual team is available 24/7/365 to help you understand options, call providers on your behalf, and schedule an appointment.



CARE REGARDLESS OF INSURANCE

Connect to care with any coverage including Medicaid, Medicare, and sliding scale options for those without insurance.



EASY ACCESS TO CARE

Use Care Match, the self-serve website, to find a provider on your own.

**GET CONNECTED
TO CARE TODAY**

888-515-0595

caresolace.com/

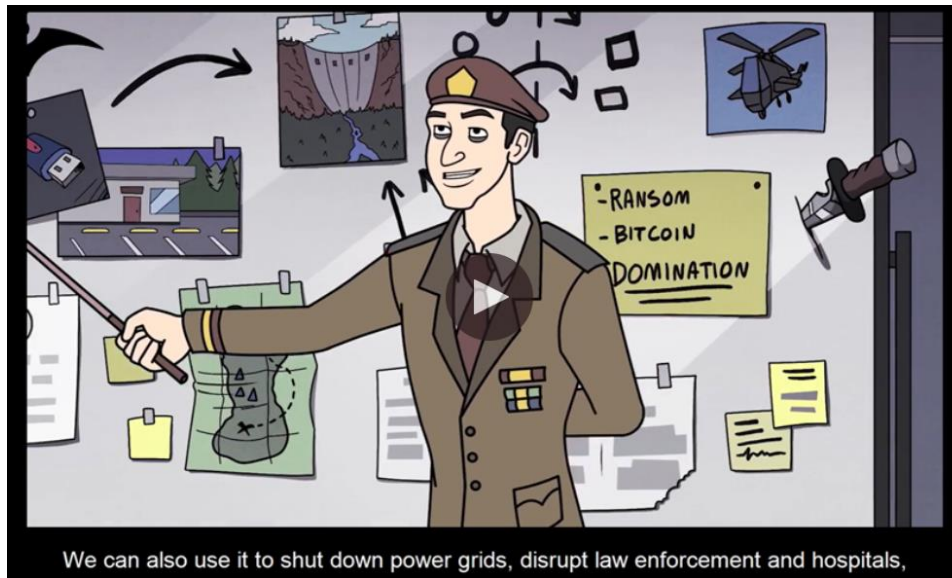


Please note: Care Solace is not an emergency response service or mental health services provider. In the event of a life threatening emergency, call 9-1-1 or the National Suicide Hotline 1-800-273-8255.

Have you ever found a random USB drive on the ground? Were you tempted to pick it up and try to locate its owner or take it and use as your own? Doing so will likely cause malicious impacts to CCU systems, devices, and/or personal networks.

USB Drops

Human curiosity opens the door to hackers and scammers. A USB drive, cleverly labeled as something that anybody would want to know, can act as the perfect bait for a large-scale infrastructure attack. In this Ninjio episode, we see how a USB drop works (a form of social engineering). USB drops tempt people to pick up unknown devices and plug them into their computers. This can be devastating on personal or work devices.



How can you protect CCU and your data?

There are steps you can take to protect the data on your USB drive and on any computer that you might plug the drive into:

- **Do not plug an unknown USB drive into your computer.** If you find a USB drive, provide it to the ITS department for review and disposal. Do not plug it into your computer to view the contents or to try to identify the owner.
- **If you do use USB drives, take advantage of security features.** Use passwords and encryption on your USB drive to protect your data, and make sure that you have the information backed up in case your drive is lost.
- **Keep personal and business USB drives separate.** Do not use personal USB drives on your work computer, and do not plug USB drives containing business information into your personal computer.
- **Disable Autorun.** The Autorun feature causes removable media such as CDs, DVDs, and USB drives to open automatically when they are inserted into a drive. By disabling Autorun, you can prevent malicious code on an infected USB drive from opening automatically.
- **Use and maintain security software and keep all software up to date.** Use a firewall, antivirus software, and anti-spyware software to make your computer less vulnerable to attacks and keep the virus definitions current. Also, keep the software on your computer up to date by applying any necessary patches.

The tips above are adapted from the CISA Security Tip: Using Caution with USB Drives (see [ST08-001](#)).